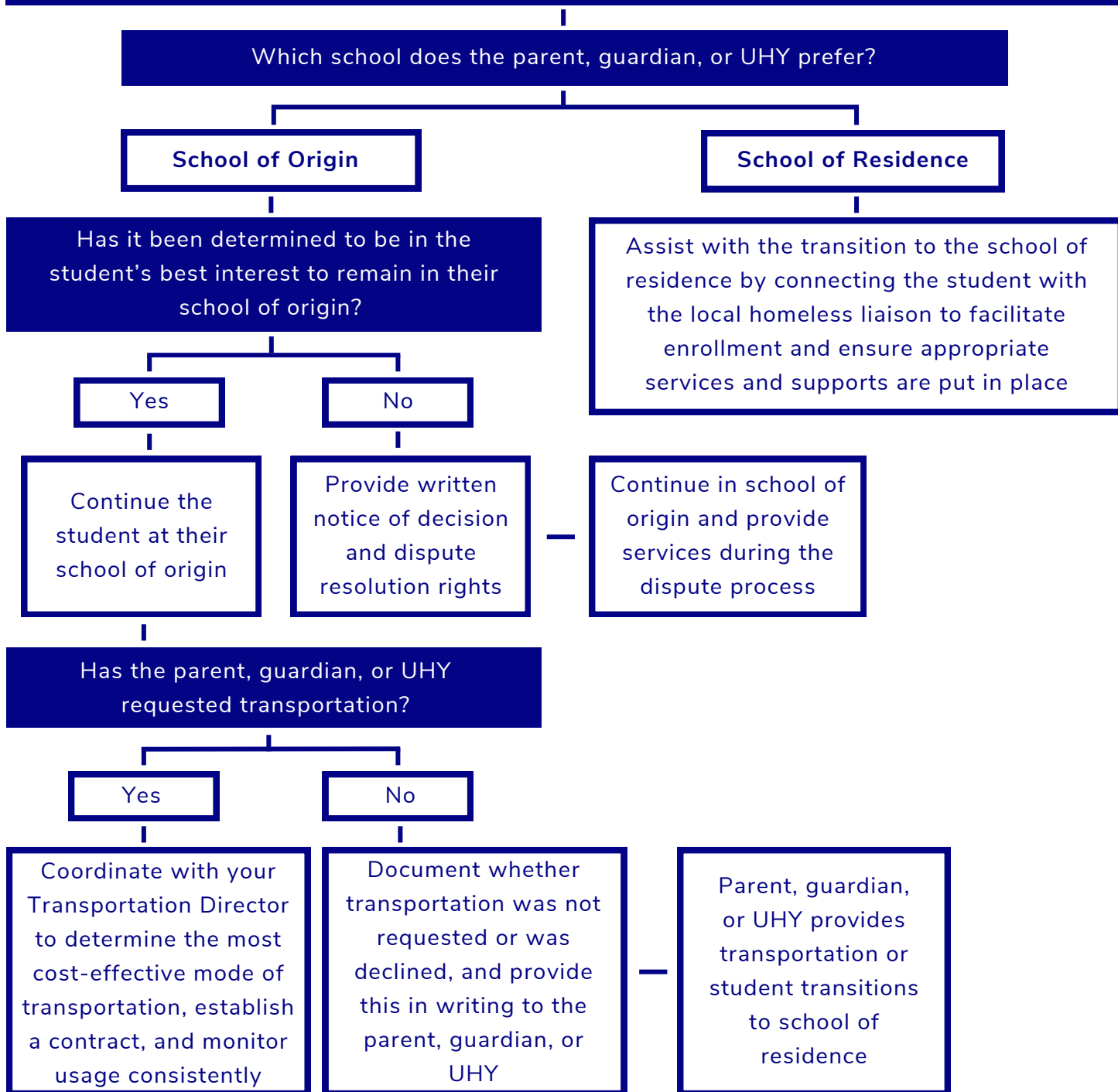


School Selection Flowchart

This flowchart outlines next steps for homeless liaisons concerning which school the student will attend. As always, all decisions should be made with the student's best interest in mind. To help with this decision, refer to the NCHPEP resource "[Considerations for Determining Best Interest](#)".

The homeless liaison must ensure that the parent, guardian, or unaccompanied homeless youth (UHY) understands their school selection options, either school of origin or school of residence.



The steps above are the minimum requirements of NCHPEP.